

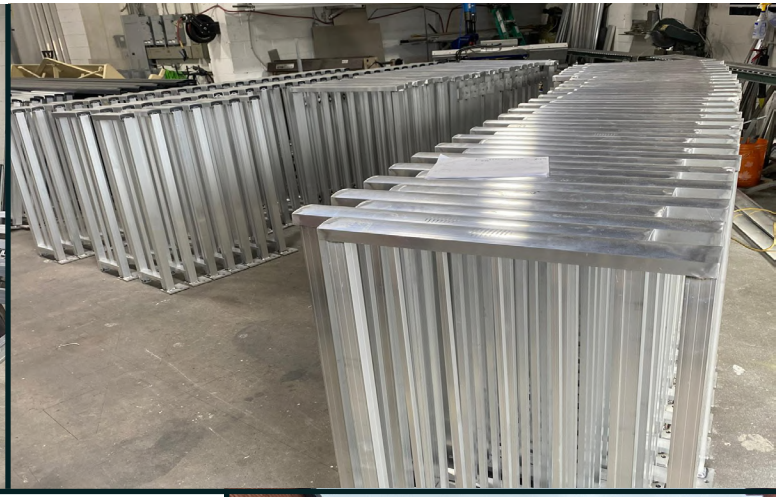
GUARDRAILS
FULLY WELDED & MECHANICAL SYSTEMS

LINK
RAILINGS AND GUARD LTD.



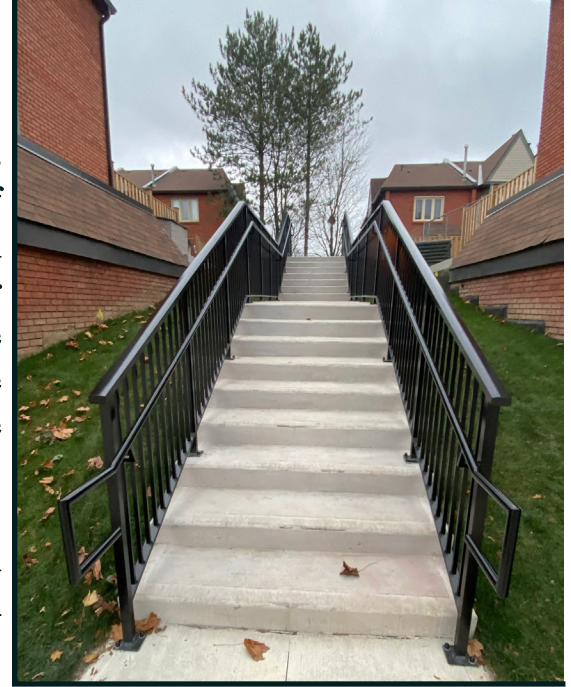
TABLE OF CONTENTS

	PAGE NO.
1.0 About us	03
2.0 Guardrail Products	04
3.0 Part options	05
3.0.1 Top rail options	05
3.0.2 Post options	05
3.0.3 Glass options	05
3.0.4 Glass options (with pattern)	05
3.0.5 Shoe options	05
4.0 Glass systems	06
4.1 Glass & Aluminum panel systems	10
4.2 Aluminum panel systems	14
4.3 Picket systems	18
4.4 Corrugated panel systems	22
4.5 Perforated panel systems	26
4.6 Thornridge systems	30
4.7 Divider panels	34
5.0 Contact us	38



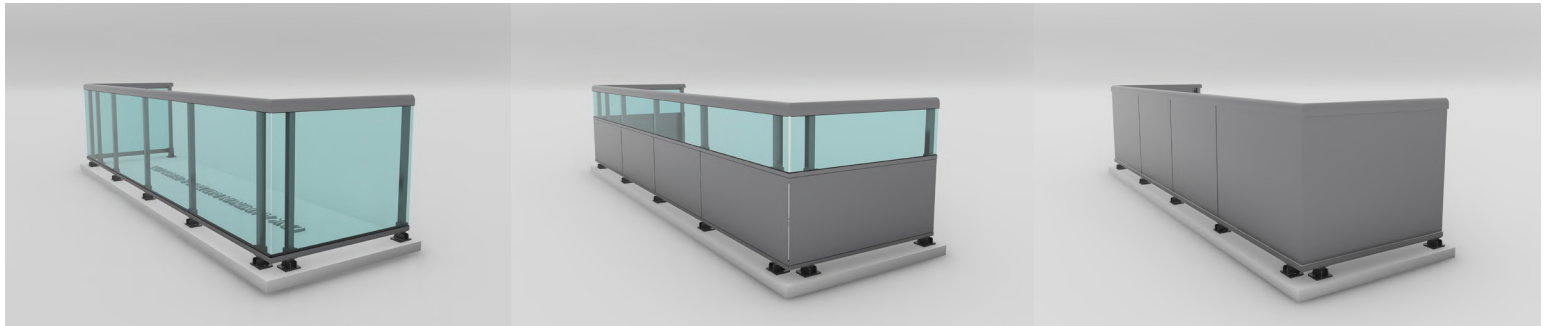
ABOUT US:

- We appreciate your interest in choosing Link Aluminum Railings & Guards for your upcoming project. With over 5 years of dedicated experience in installing and maintaining fenestration products within the high-rise and townhouse industries, our team has garnered invaluable expertise, particularly in the design and fabrication of railing systems. As a team, we are dedicated to delivering top-notch products and services while maintaining a commitment to timely project completion.
- At Link, we specialize in crafting cutting-edge architectural aluminum building envelope solutions. If innovation is what you seek, you've come to the right destination.
- With our experienced team continually integrating the latest technologies, we assure you of the best service in Ontario. Our mission is to deliver premium quality at the most competitive rates and within optimal timeframes. We take pride in offering the industry's leading mechanical guardrail system, engineered to deliver optimal performance. Our approach to project challenges is rooted in a commitment to exceptional customer service, prioritizing health and safety measures, and maintaining an unwavering dedication to product excellence.



/// GUARDRAIL PRODUCTS

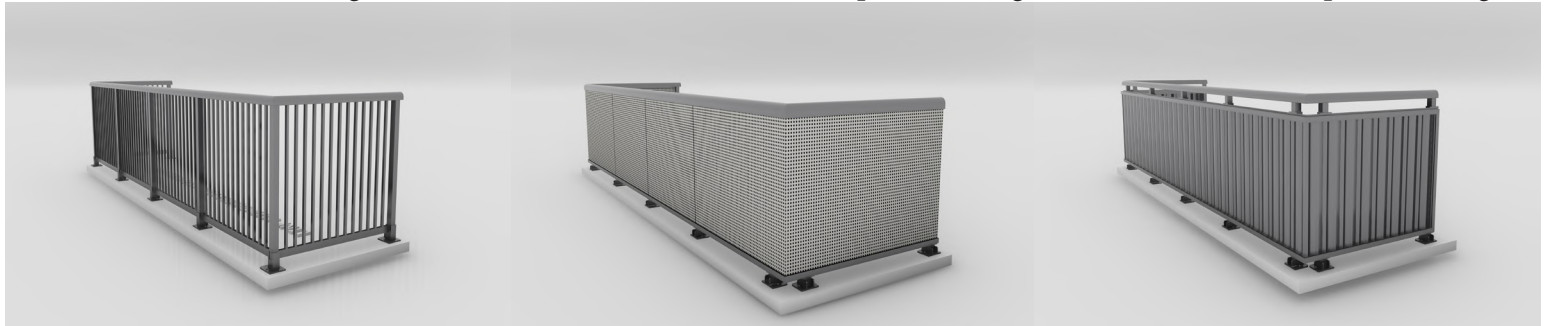
- GLASS SYSTEMS
- GLASS & METAL COMBINED SYSTEMS
- ALUMINUM PANEL SYSTEM
- PICKET SYSTEMS
- CORRUGATED PANEL SYSTEMS
- THORNTRIDGE SYSTEMS
- PERFORATED PANEL SYSTEM
- DIVIDER PANELS



LRG - Glass Railings

LRGP - Glass & Aluminum panel Railings

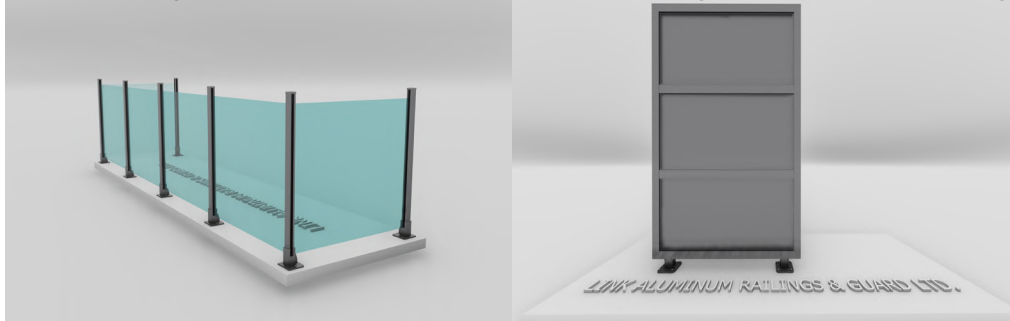
LRP - Aluminum panel Railings



LRAP - Aluminum picket Railings

LRPP - Perforated panel Railings

LRC - Corrugated panel Railings



LRT - Thornridge Railings

LRD - Divider panels

APPLICABLE STANDARDS:

ASTM A307

Standard specification for carbon steel bolts and studs 60 000 PSI tensile strength

CWB CERTIFIED:

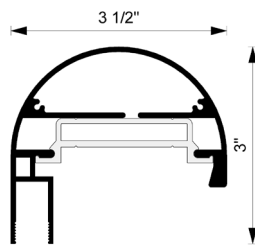
CSA W59.2-M1991(R2008) Welded aluminum construction

CSA W47.2-11

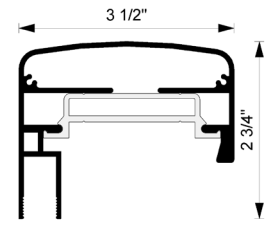
Certifications of companies for fusion welding of aluminum.

TOP RAIL OPTIONS

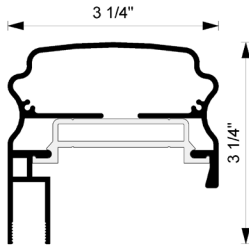
- A) Inside or Outside Glass/Panel
- B) Center Glass/Panel/Picket



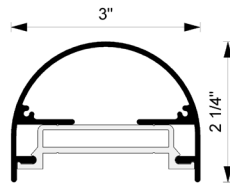
A-1



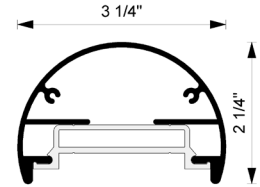
A-2



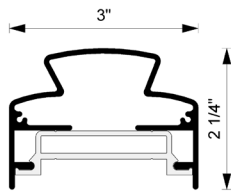
A-3



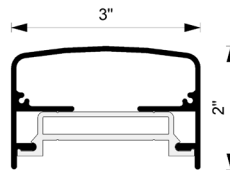
B-1



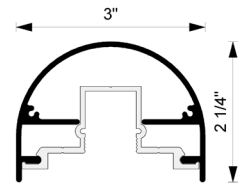
B-2



B-3



B-4



B-5

*B-5 is available for full picket railings

POST OPTIONS

- 1" X 2" Rectangular post
- 1 1/2" X 2" Rectangular post
- 2" X 2" Rectangular post



GLASS OPTIONS



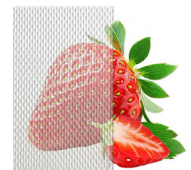
Clear



Light gray



Light green



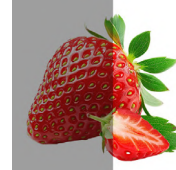
Pinhead



Bronze



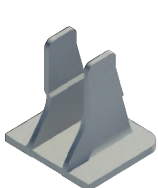
Solar blue



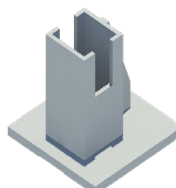
Dark gray

* See individual system description for other glass options.

SHOE OPTIONS



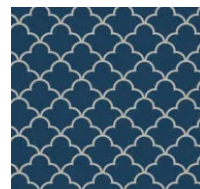
LRS001



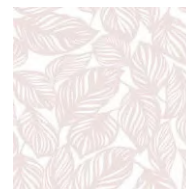
LRS002



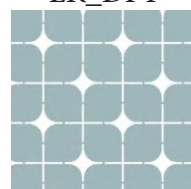
LR_DP1



LR_DP2



LR_DP3



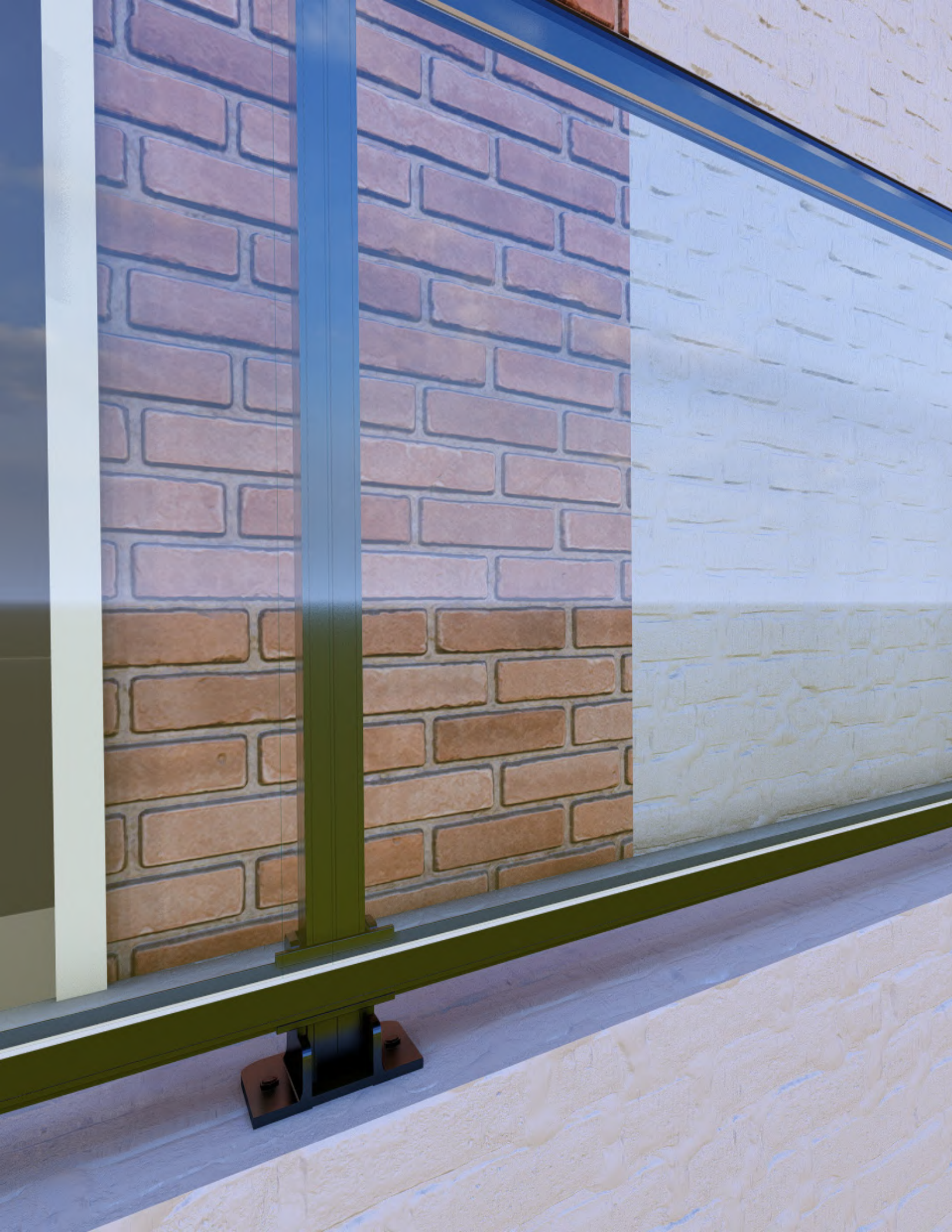
LR_DP4



LR_DP5



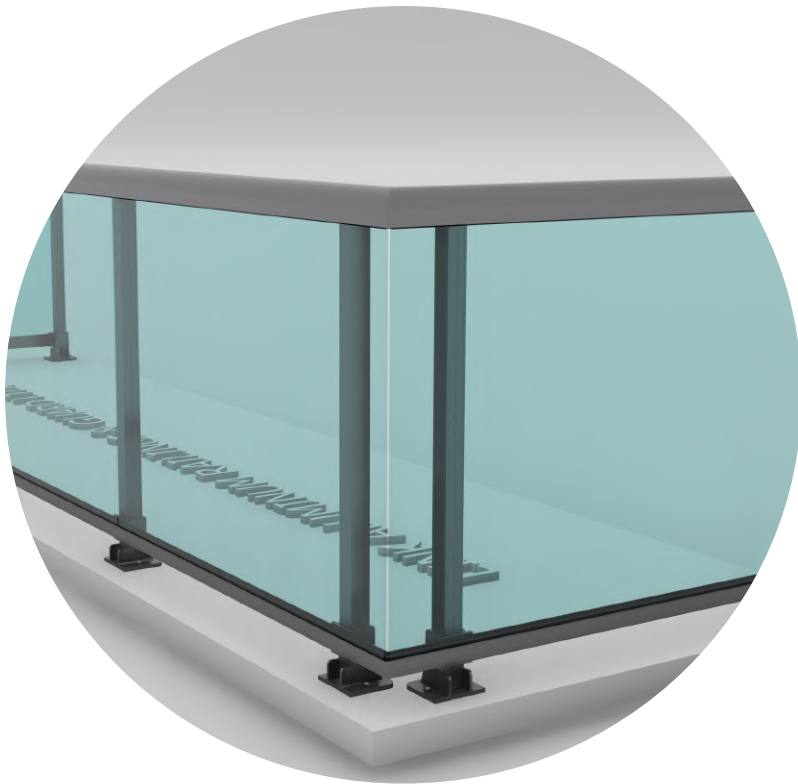
LR_DP6





GLASS SYSTEMS

Our Glass systems make clear the boundaries between indoor and outdoor areas, encouraging interaction with the surroundings and optimizing the amount of natural light that enters the room.



LRG-0001 Top Mounted Clear Glass Panels

GLASS OPTIONS

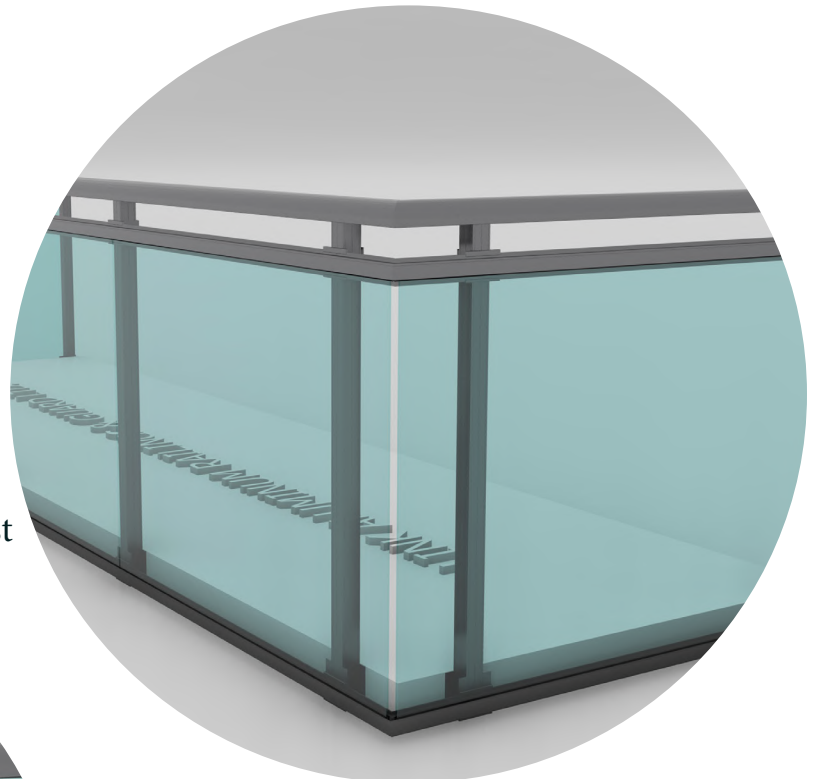
Standard Glass

- Clear
- Light Gray
- Solar Blue
- Bronze
- Light green

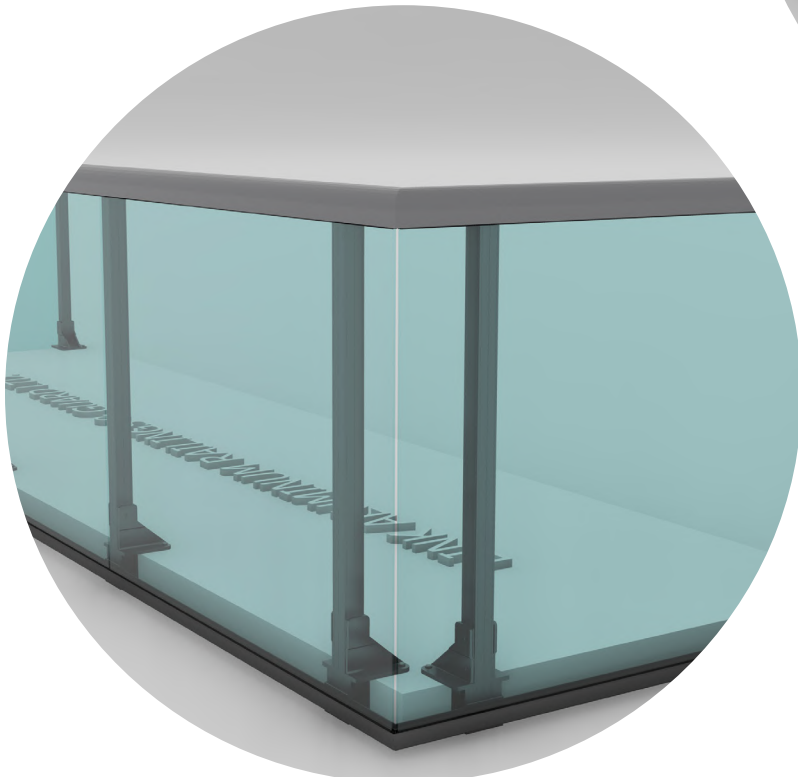
Premium Glass

- Laminated
- Fosted
- Dark gray
- Other bird friendly glass upon request
- Special colors upon request

With our systems, you can arrange the glass panels as you need: outside the posts for a bold architectural statement, inside the posts for additional stability and security, or between the supporting pillars for a seamless, contemporary look. Whether strength, style, or aesthetic appeal are your top priorities, our systems can easily meet them. This gives you creative freedom. The half-round top rail improves grip while reducing the accumulation of snow and water. Gaskets made of PVC on top and Bottom channels stop the glass from bending, rattling, and shifting. We also have various options available for top rails that meet these criterias.



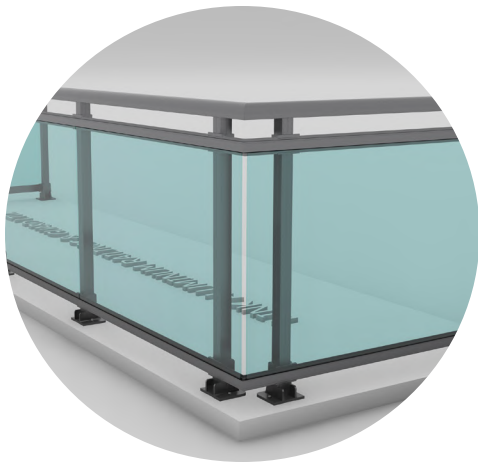
LRG-0002 Side Mounted Clear Glass Panels



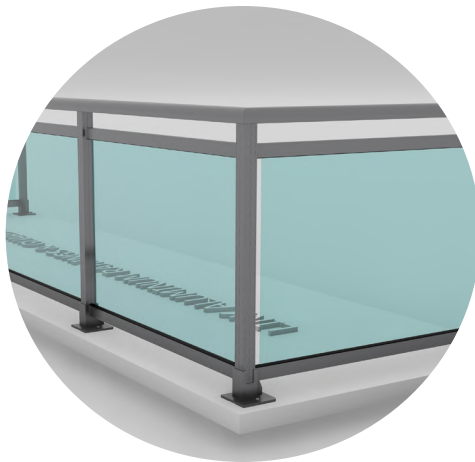
LRG-0003 Overhung Top Mounted Clear Glass Panels

Mounting options

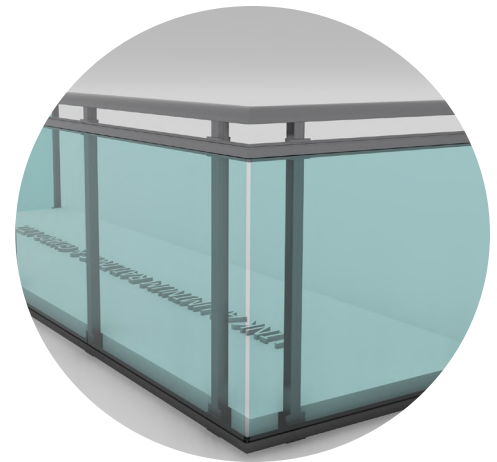
- Top mount
- Side Mount
- Overhead Top mount



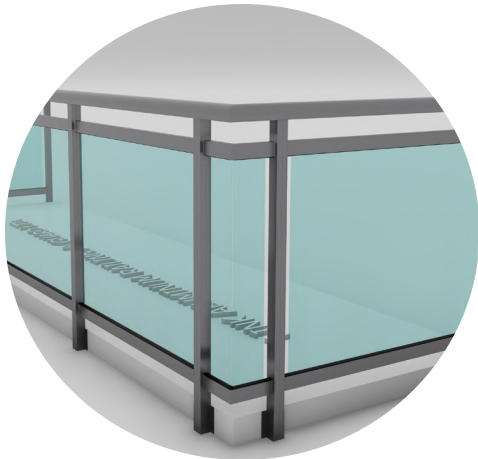
LRG-0001-A Top Mounted Clear Glass Panels



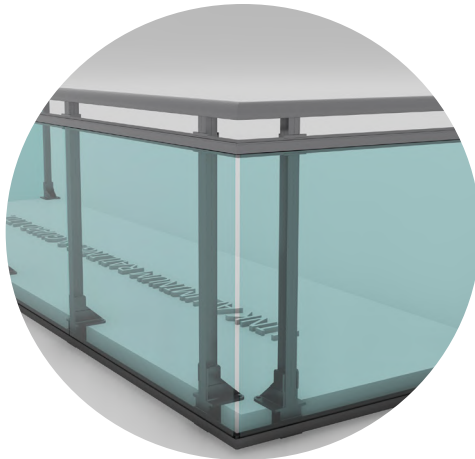
LRG-0001-B Top Mounted Clear Glass Panels



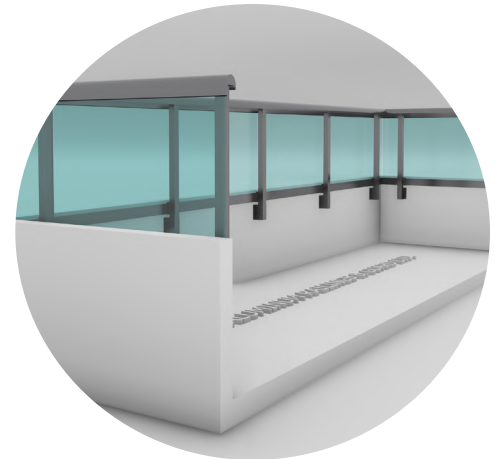
LRG-0002-A Side Mounted Clear Glass Panels



LRG-0002-B Side Mounted Clear Glass Panels



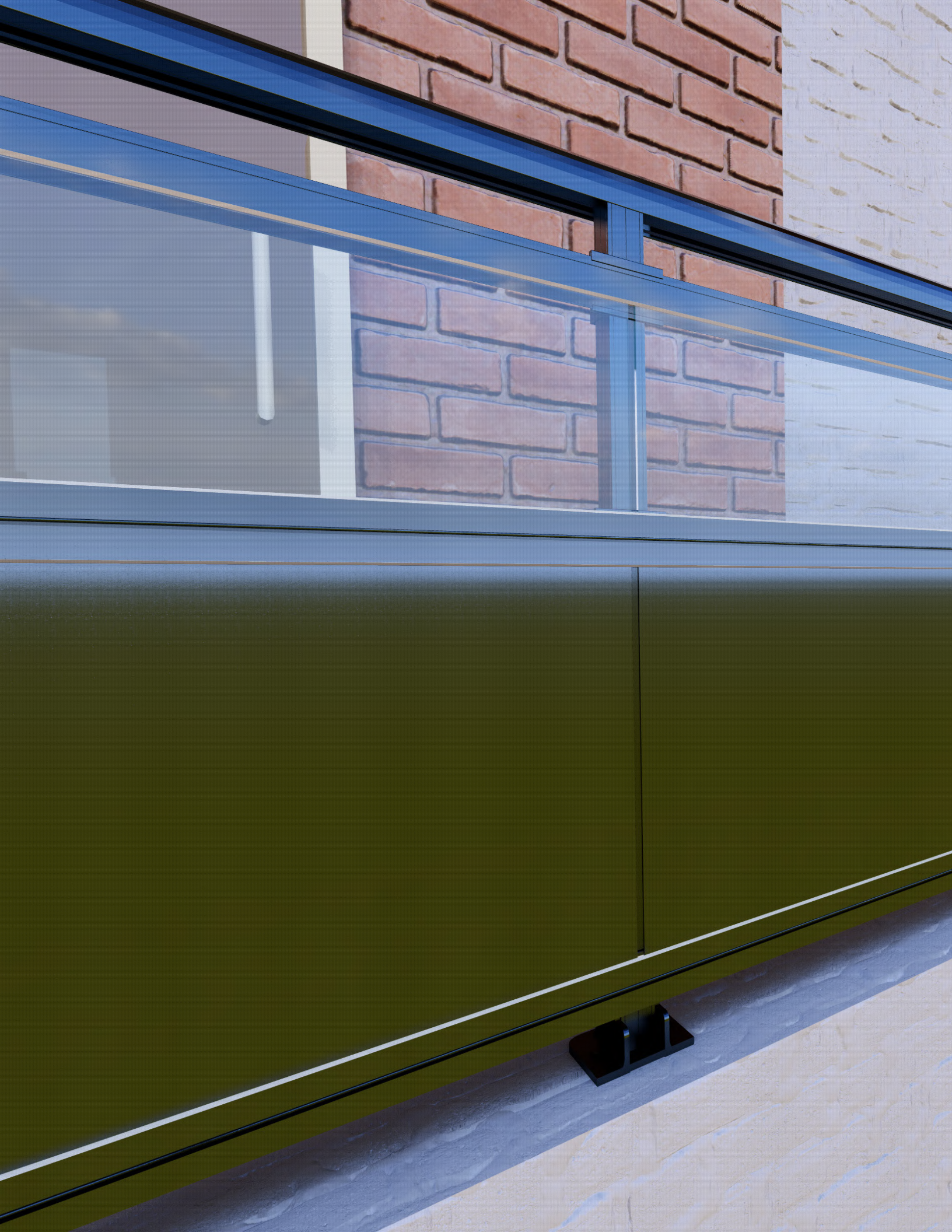
LRG-0003-A Overhung Top Mounted Clear Glass Panels



LRG-0004 Wall Mounted Parapet Clear Glass Panels

- Post dimensions : Various options available , (1"X2", 1 1/2"/2", 2"/2")
- Extruded screw spline joinery
- Interior or Exterior glazed panels
Available for 6mm & 8mm glasses
- Available with multiple top rail designs: (Refer to page 6)
- Tested to CSA & OBC requirements
- Finish in Duracron, Acrynar, Duranar (XL) and Anodized

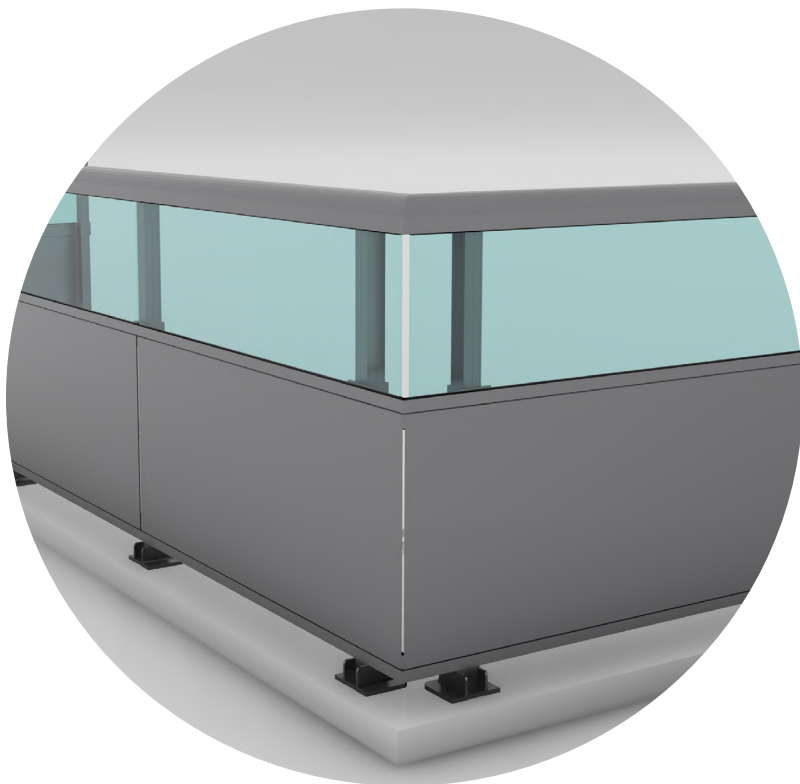
*The color of the actual glass may differ from the pictures. The ability to display colors varies throughout monitors and mobile displays, and individual perception of color may vary as well. Furthermore, the displayed photos are rendering. For accurate depiction, get in touch with us to acquire glass samples.





GLASS & ALUMINUM PANEL SYSTEMS

The combination of glass and aluminum panels creates a strong barrier that blocks out light and views while improving safety. Because of this, they work especially well on balconies, terraces, and staircases where it's important to keep the space feeling open and spacious.



LRGP-001 Top Mounted Clear Glass & Aluminum Panel

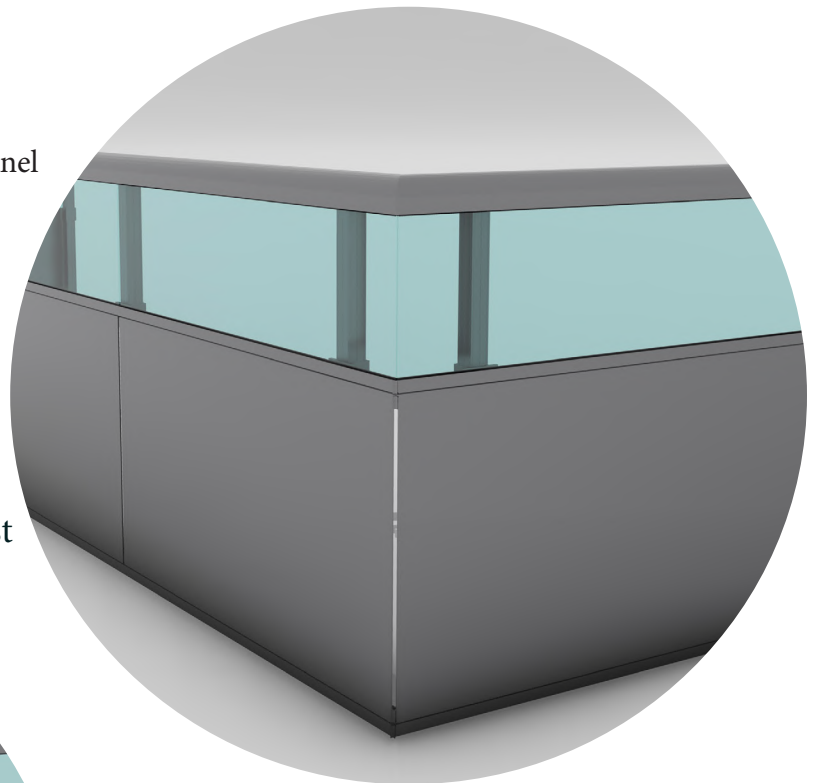
GLASS OPTIONS

Standard Glass

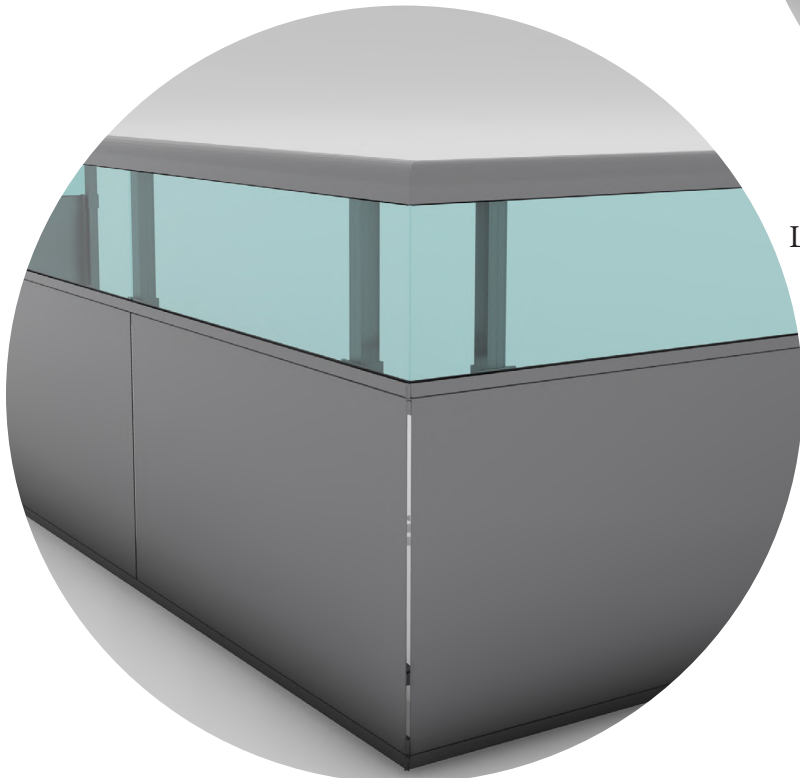
- Clear
- Light Gray
- Solar Blue
- Bronze
- Light green

Premium Glass

- Laminated
- Fosted
- Dark gray
- Other bird friendly glass upon request
- Special colors upon request



LRGP-0002 Side Mounted Clear Glass & Aluminum Panel



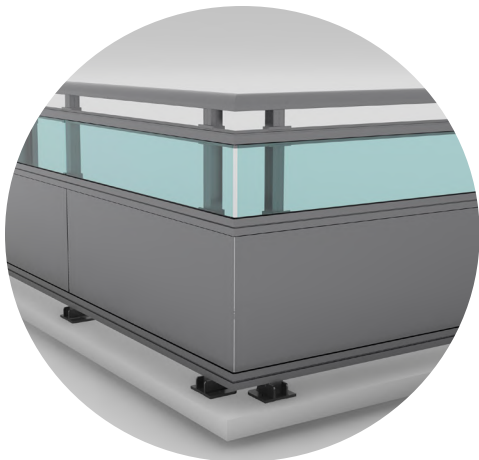
LRGP-0003 Overhung Top Mounted Clear Glass & Aluminum Panel

Our system has premium glass panels that offer clear vistas while also providing crucial support and safety. Accompanying these panels are professionally designed aluminum components that guarantee lifespan and structural strength in any setting.

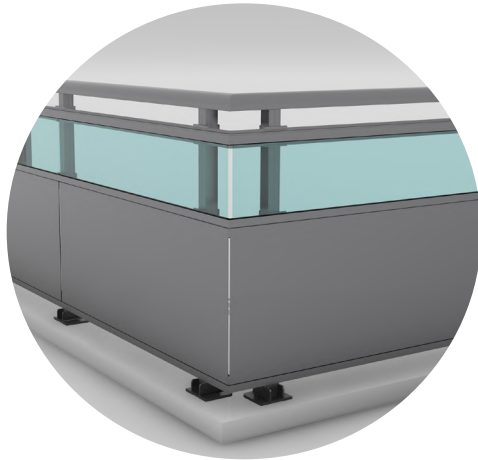
Our system's mechanical capability is one of its main selling points since it provides unparalleled installation and customization freedom. Our technology lets you design a completely custom railing solution that perfectly complements your architectural vision because it comes in a variety of finishes and combinations.

Mounting options

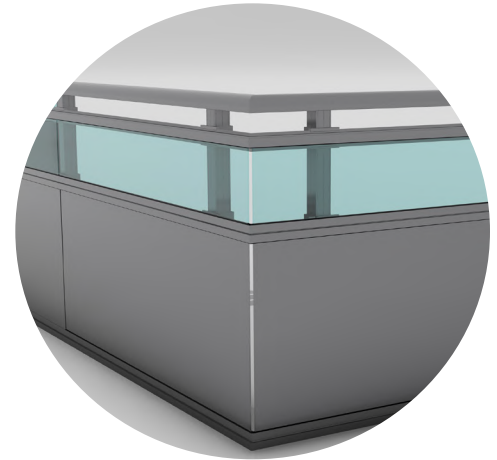
- Top mount
- Side Mount
- Overhead Top mount



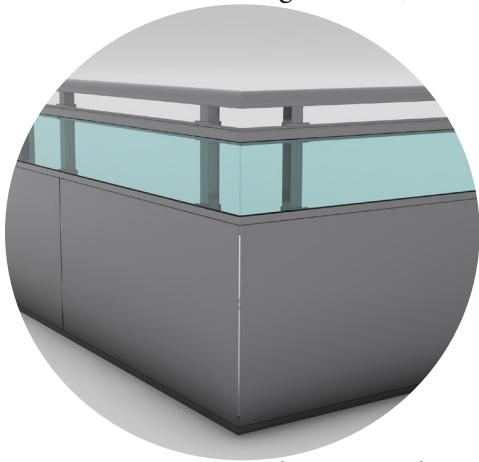
LRGP-0001-A Top Mounted
Clear Glass & Aluminum panel
Combined (Straight insert)



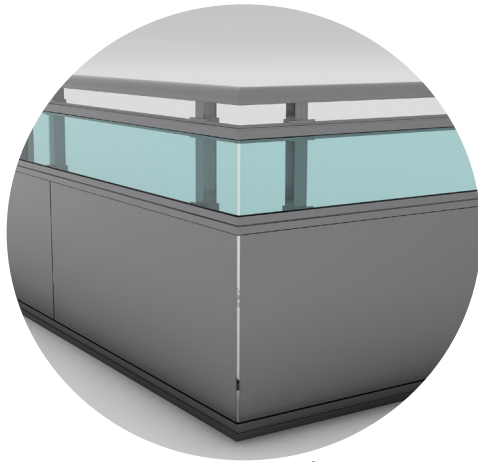
LRGP-0001-B Top Mounted
Clear Glass & Aluminum panel
Combined (90° insert)



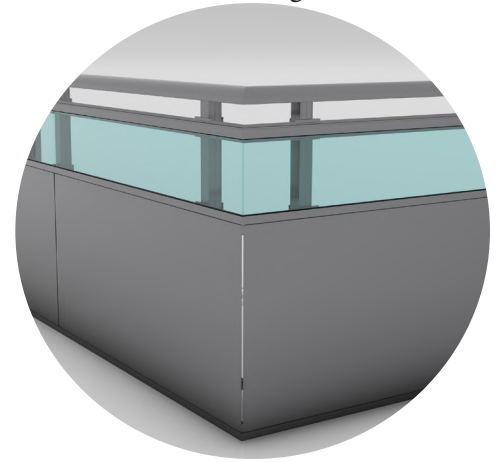
LRGP-0002-A Side Mounted Clear
Glass & Aluminum panel
Combined (Straight insert)



LRGP-0002-B Side Mounted
Clear Glass & Aluminum panel
Combined (90° insert)



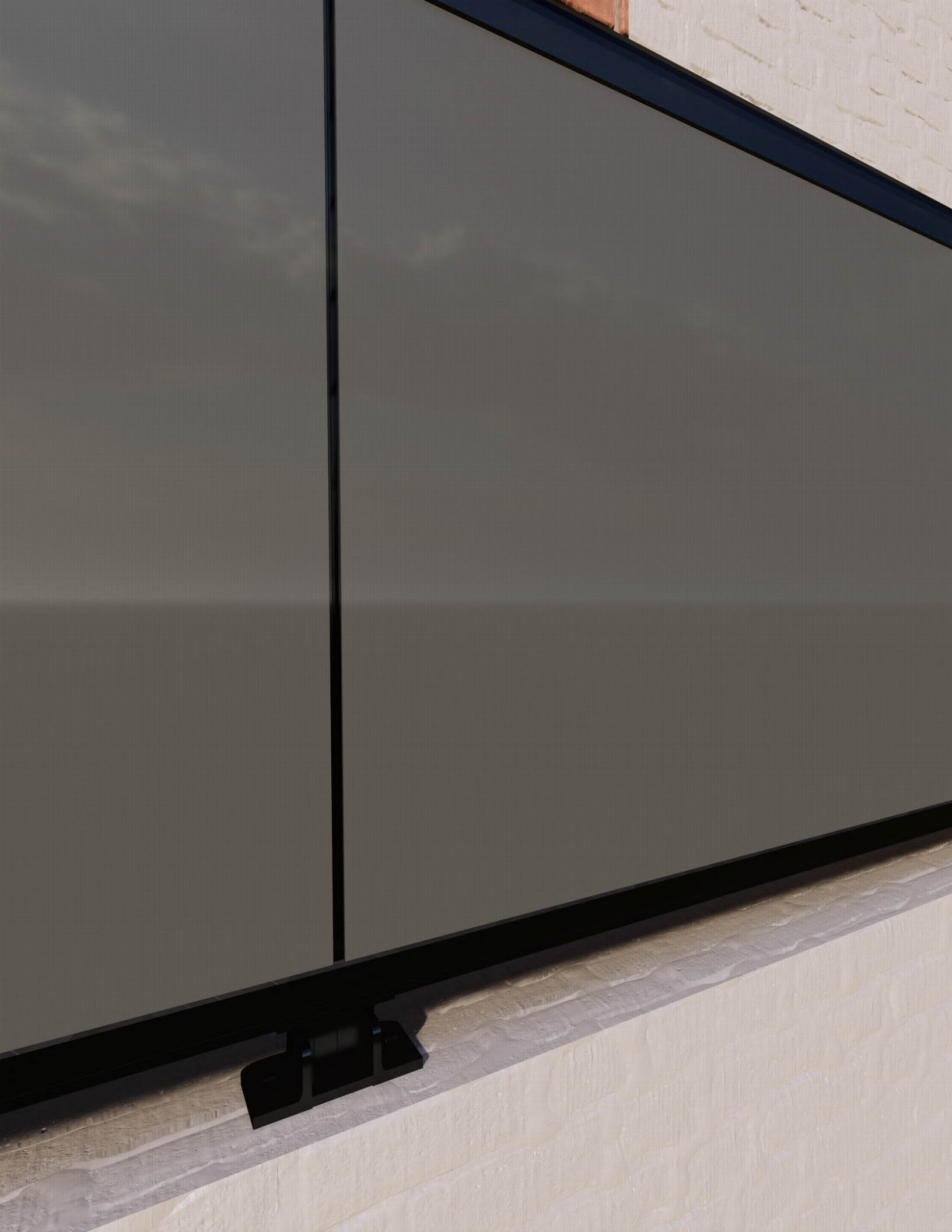
LRGP-0003-A Overhung Top
Mounted Clear Glass & Aluminum
panel Combined (Straight insert)



LRGP-0003-B Overhung Top
Mounted Clear Glass & Aluminum
panel Combined (90° insert)

- Post dimensions : Various options available , (1"X2", 1 1/2"/2", 2"/2")
- Extruded screw spline joinery
- Interior or Exterior glazed panels
Available for 6mm & 8mm glasses
- Accepts 3mm aluminum panel within aluminum J & H channel
- Available with multiple top rail designs: (Refer to page 6)
- Tested to CSA & OBC requirements
- Finish in Duracron, Acrynar, Duranar (XL) and Anodized

*The color of the actual glass may differ from the pictures. The ability to display colors varies throughout monitors and mobile displays, and individual perception of color may vary as well. Furthermore, the displayed photos are rendering. For accurate depiction, get in touch with us to acquire glass samples.

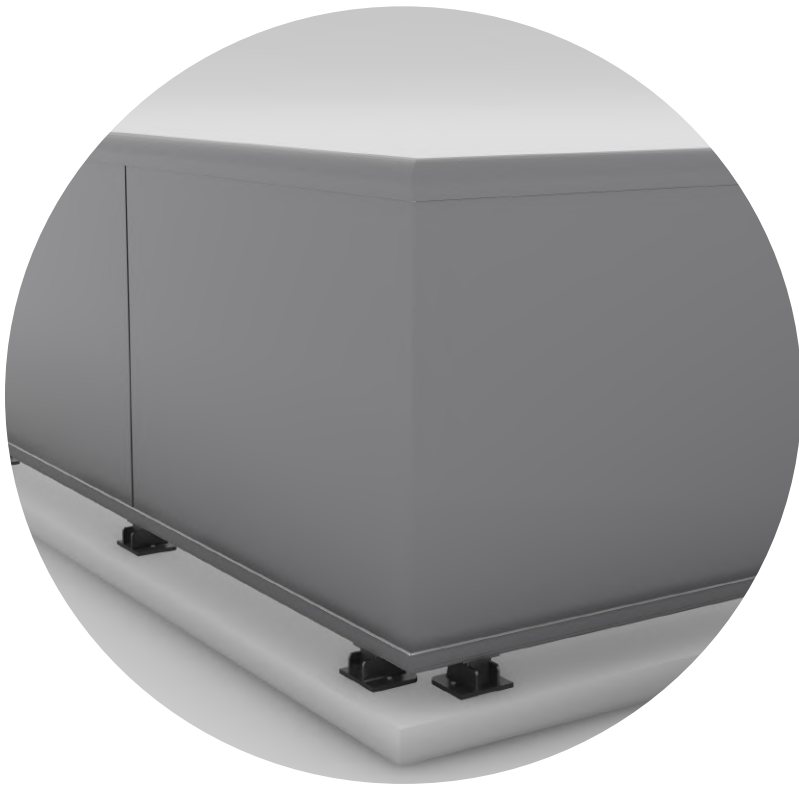




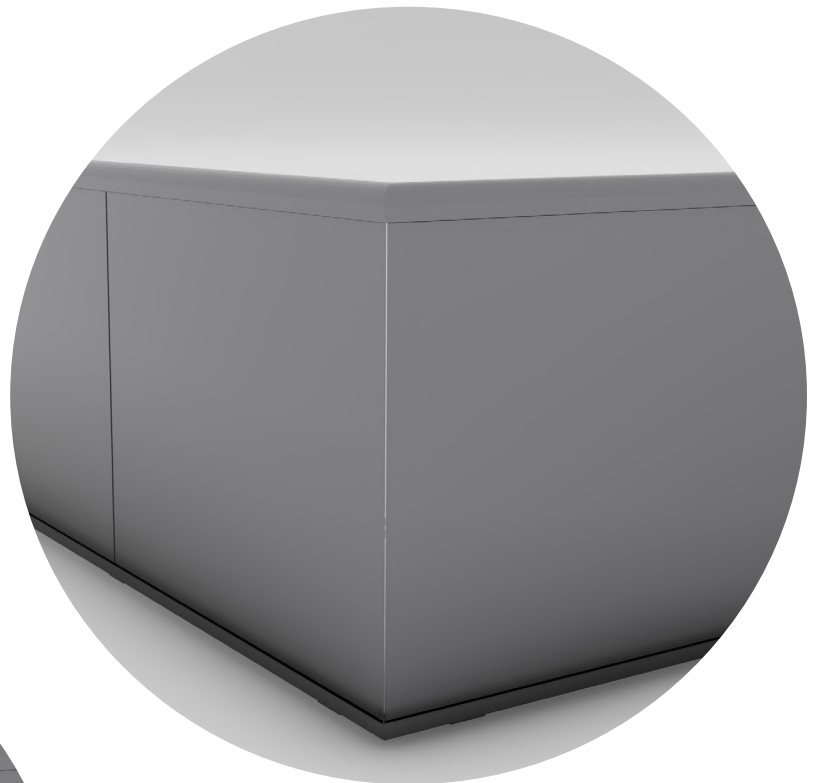
ALUMINUM PANEL SYSTEMS

Utilizing a combination of strong practicality and modern design, our aluminum panel railing system will elevate any area. Our long-lasting railing solution, which is precisely crafted, provides protection and style in any environment.

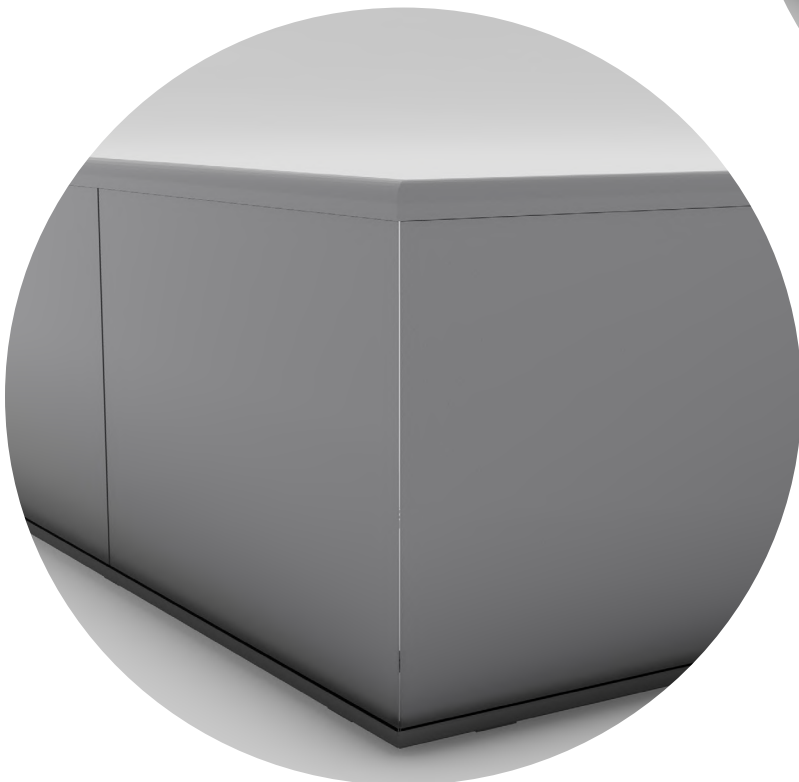
With our aluminum panel railing system, experience modern elegance personified. The greatest choice for increased safety and non-transparent periphery panels is aluminum. We offer different finishes and adjustable shoes for our systems. For greater choice and flexibility, we offer aluminum panels up to 6mm thick. We also provide wall mount parapet systems to elevate your balconies.



LRP-0001 Top Mounted Aluminum panel system



LRP-0002 Side Mounted Aluminum panel system



LRP-0003 Overhung Top Mounted Aluminum panel system
LINK ALUMINUM RAILINGS & GUARD LTD.

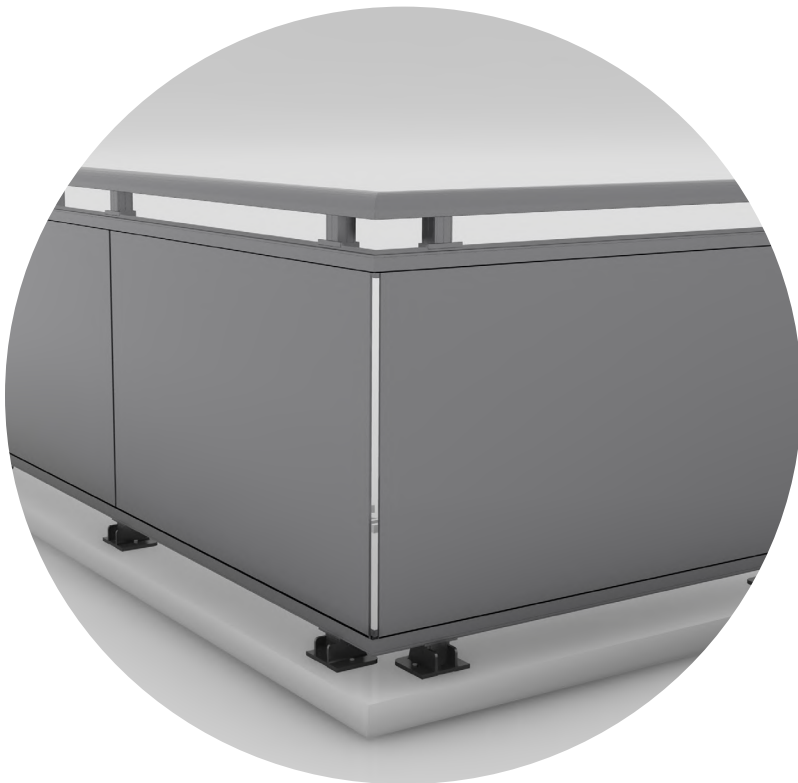
Mounting options

- Top mount
- Side Mount
- Overhung top mount



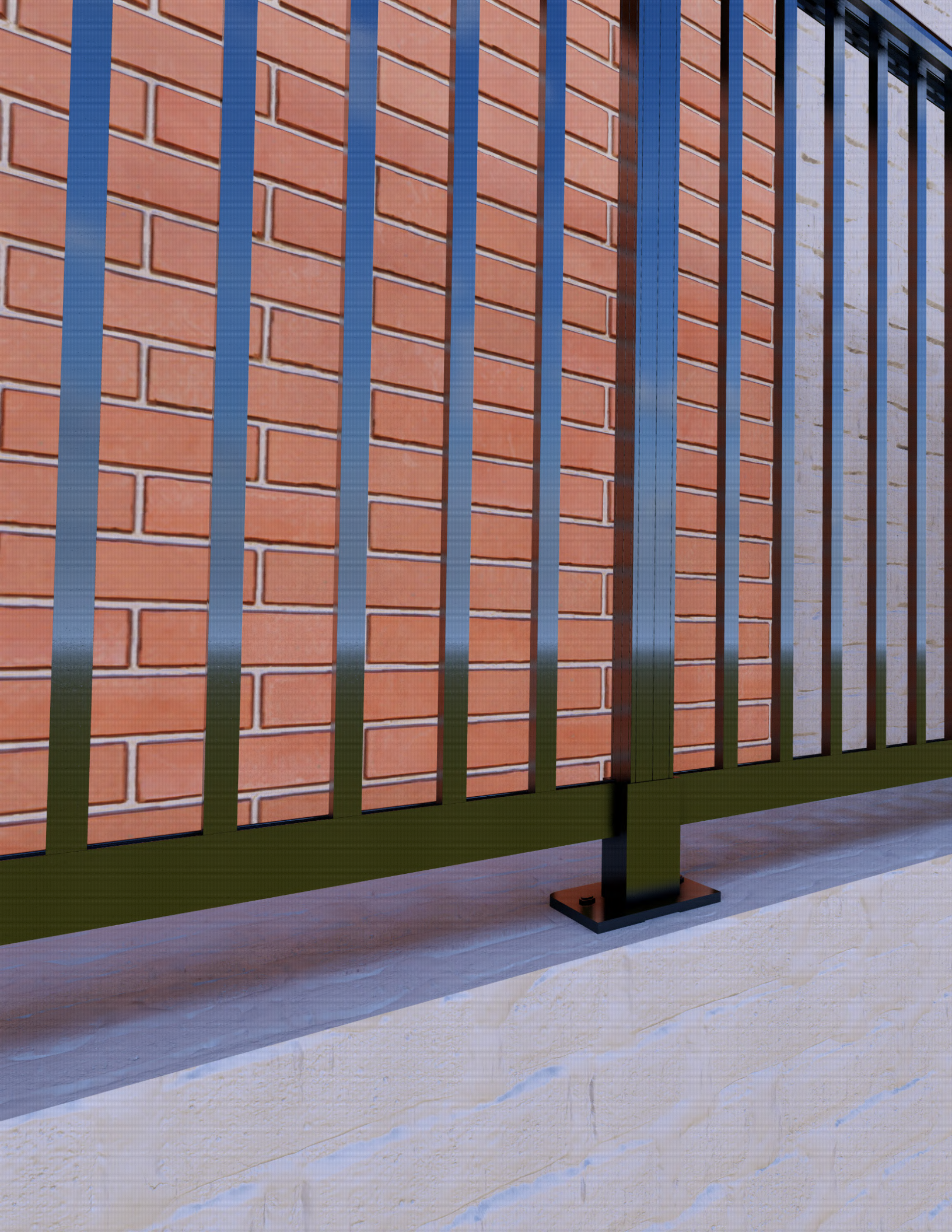
- Post dimensions : Various options available , (1"X2", 1 1/2"/2", 2"/2")
- Extruded screw spline joinery
- Accepts 3mm aluminum panel within aluminum J & H channel
- Available with multiple top rail designs: (Refer to page 6)
- Tested to CSA & OBC requirements
- Finish in Duracron, Acrynar, Duranar (XL) and Anodized

LRP-0004 Side Mounted Parapet Aluminum panel system



LRP-0001-A Top Mounted Aluminum panel system

*The color of the actual system may differ from the pictures. The ability to display colors varies throughout monitors and mobile displays, and individual perception of color may vary as well. Furthermore, the displayed photos are rendering. For accurate depiction, get in touch with us to acquire glass samples.





PICKET SYSTEMS

Mechanical picket systems provide a classic solution that blends elegance and functionality, whether you're trying to bring out the beauty of an old building or add a little sophistication to a new one.

We are expert in the manufacturing of Picket systems with having great systems which make us unique among the all. We provide adjustable picket profiles, spacing, and configurations to meet your requirements. Our mechanical picket system's core values are performance and durability. Every part is meticulously made to endure daily use and the test of time.



LRAP-0001 Top Mounted Picket system

PICKET OPTIONS

- 20mm X 20mm
- 20mm X 38.10mm



LRAP-0002 Side Mounted Picket system



LRGP-0001-A Side Mounted Picket system

LINK ALUMINUM RAILINGS & GUARD LTD.

Mounting options

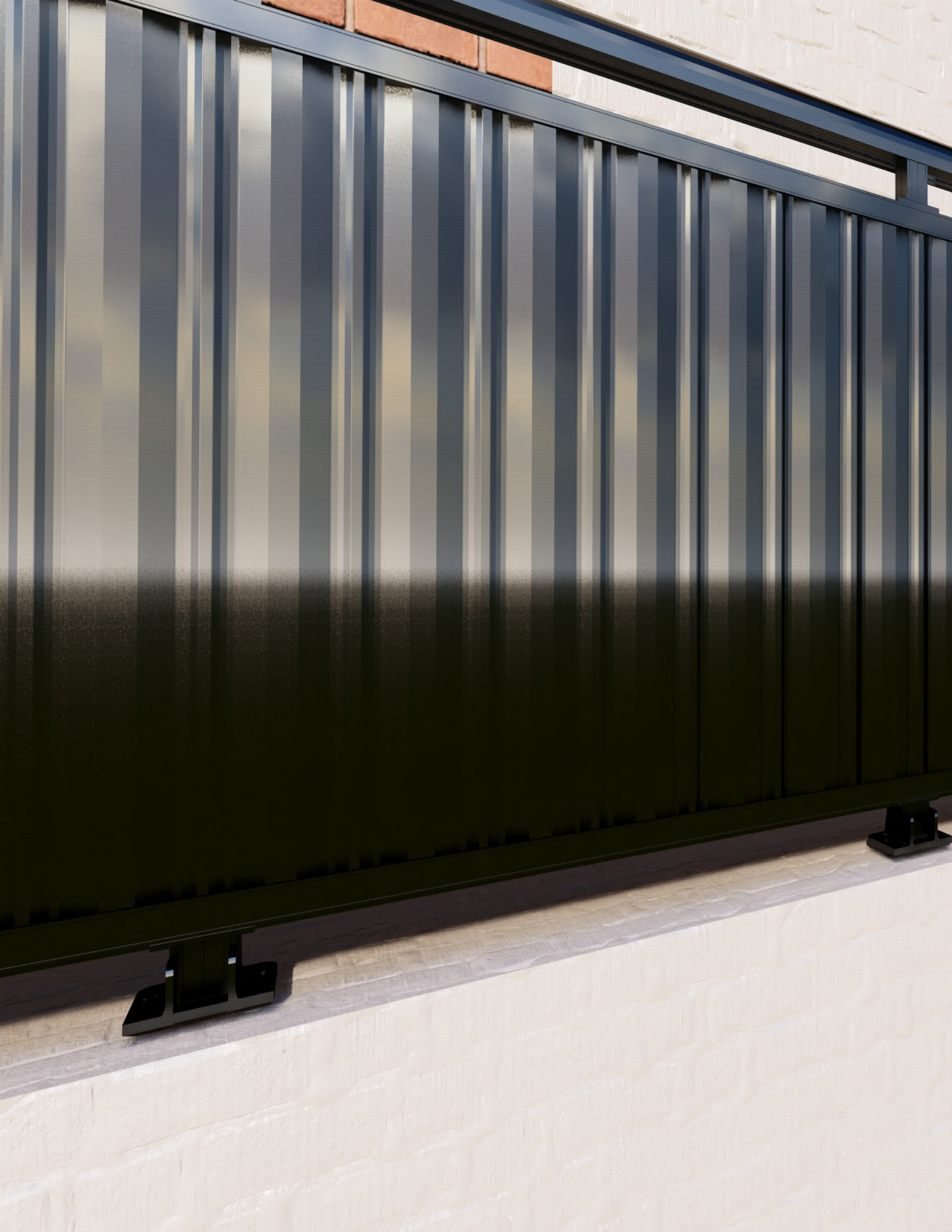
- Top mount
- Side Mount



LRGP-0002-A Side Mounted Picket system

- Post dimensions : Various options available , (1"X2", 1 1/2"/2", 2"/2")
- Extruded screw spline joinery
- Accepts various picket sizes with H channel screwed to the post.
- Available with multiple top rail designs: (Refer to page 6)
- Tested to CSA & OBC requirements

*The color of the actual system may differ from the pictures. The ability to display colors varies throughout monitors and mobile displays, and individual perception of color may vary as well. Furthermore, the displayed photos are rendering. For accurate depiction, get in touch with us to acquire glass samples.

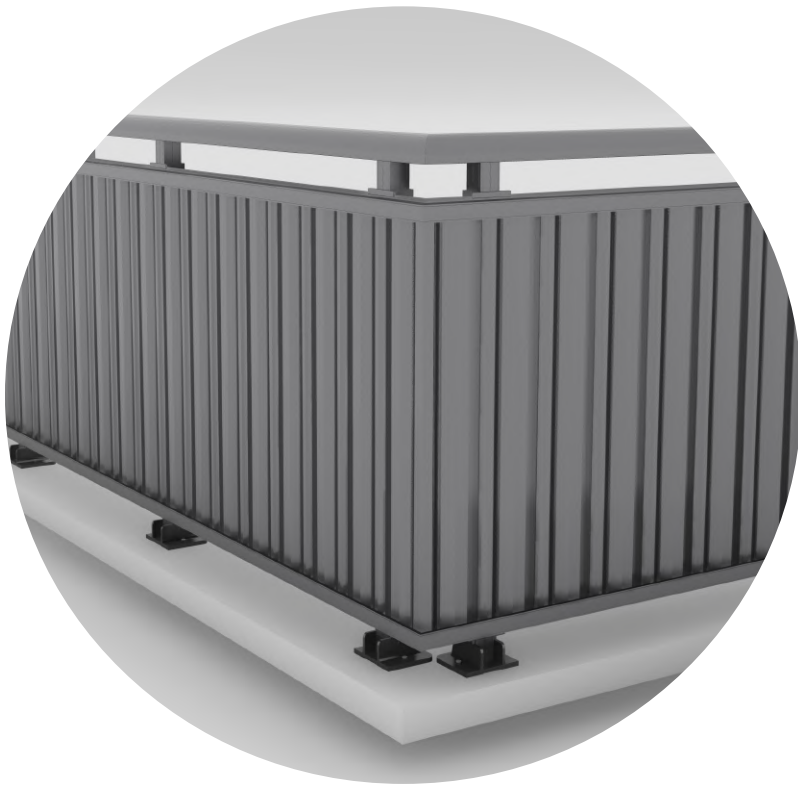




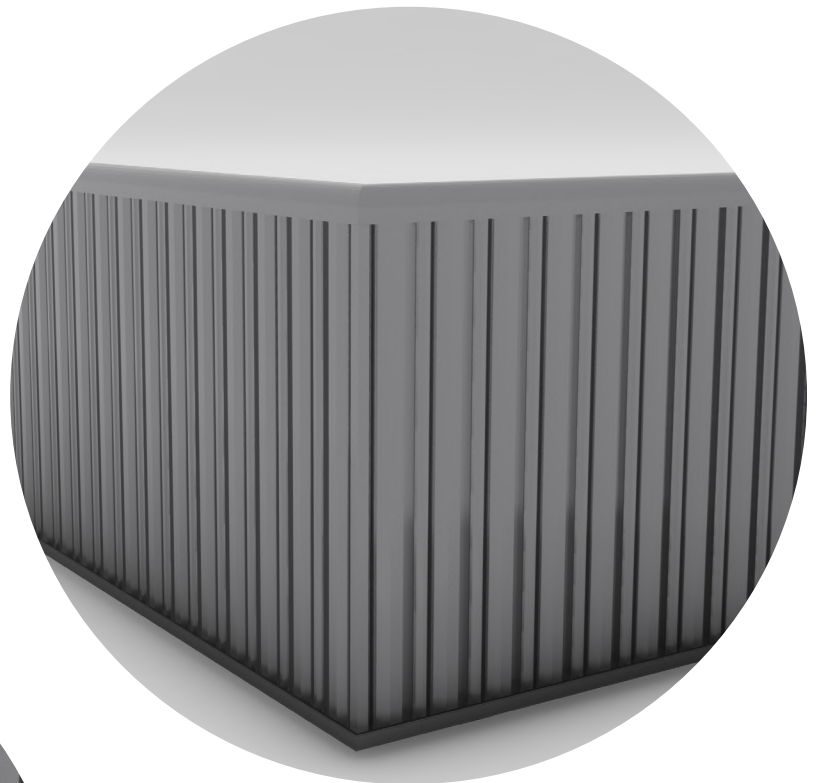
CORRUGATED PANEL SYSTEMS

Corrugated panel systems are ideal for outdoor applications because they offer increased durability and resilience to environmental factors. Because of its small weight, installation is simpler and less expensive.

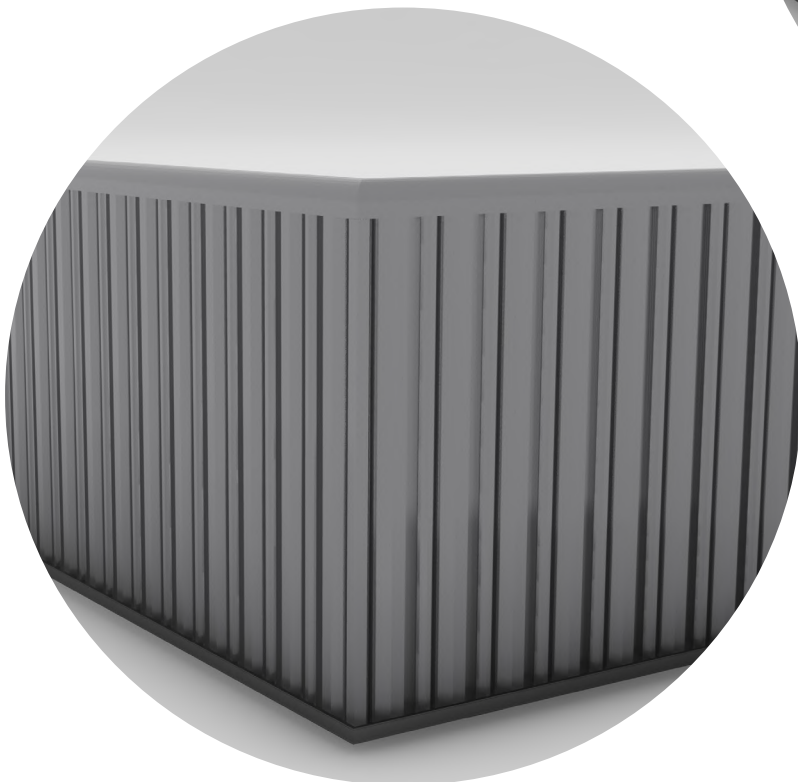
Our corrugated systems are precisely made to provide elegant and modern style balconies. They are lightweight and can be easily customized to fit various design preferences and architectural styles. Our corrugated railing is made to be resilient and long-lasting, so it can endure outside conditions without sacrificing its stylish appeal. Discover the possibilities of modern design by utilizing our corrugated railing option right now.



LRC-0001 Top Mounted Corrugated panel system



LRC-0002 Side Mounted Corrugated panel system



LRC-0003 Overhung Top Mounted Corrugated panel system
LINK ALUMINUM RAILINGS & GUARD LTD.

Mounting options

- Top mount
- Side Mount
- Overhung top mount



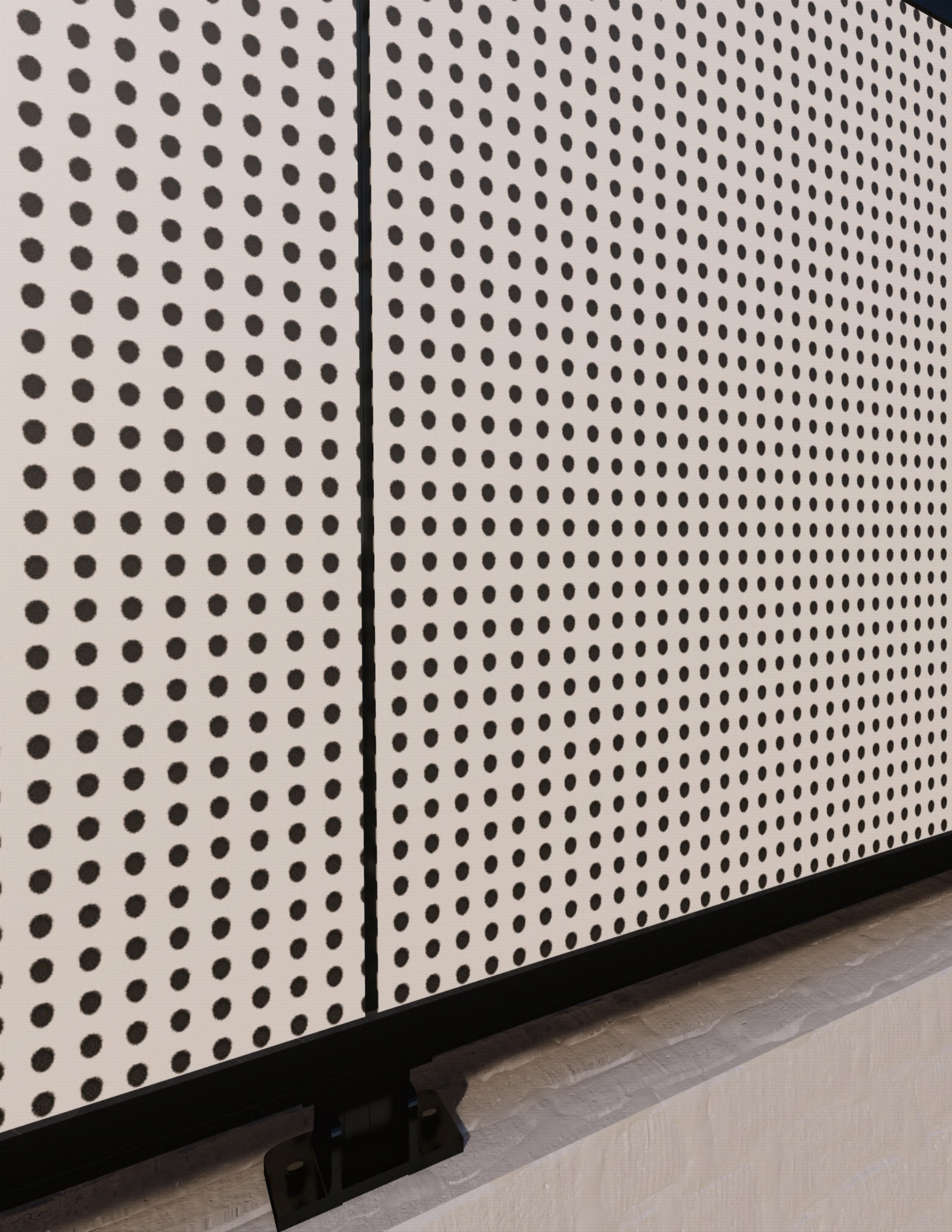
- Post dimensions : Various options available , (1"X2", 1 1/2"/2", 2"/2")
- Extruded screw spline joinery
- Accepts 3mm THK. Corrugated aluminum panel within aluminum J & H channel
- Available with multiple top rail designs: (Refer to page 6)
- Tested to CSA & OBC requirements
- Finish in Duracron, Acrynar, Duranar (XL) and Anodized

LRC-0002-A Side Mounted Corrugated panel system



LRC-0003-A Overhung Top Mounted Corrugated panel system

*The color of the actual system may differ from the pictures. The ability to display colors varies throughout monitors and mobile displays, and individual perception of color may vary as well. Furthermore, the displayed photos are rendering. For accurate depiction, get in touch with us to acquire glass samples.





PERFORATED PANEL SYSTEMS

These panels work well with a modern aesthetic since the holes drilled into the aluminum panel enhance the building's aesthetic appeal and provide airflow through it.

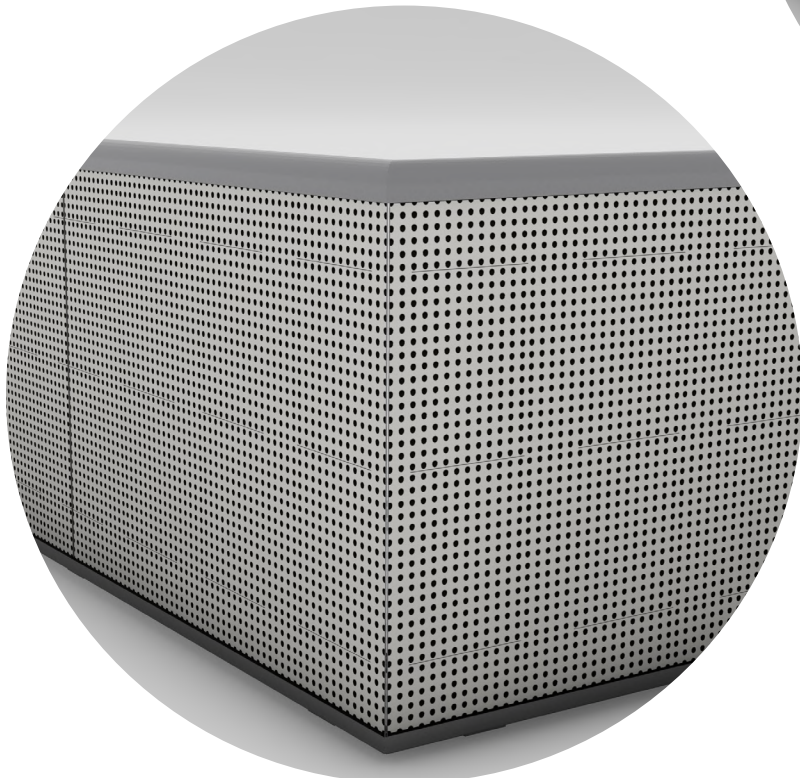


LRPP-001 Top Mounted Perforated panel system

Our newly introduced perforated mechanical system is highly compatible with every outdoor place. The mechanical system allows us to adjust the panel between two rails. The unique gaskets used for these railings hold the panel tight to provide you more safety. Each perforation is expertly dimensioned to strike the perfect balance between airflow, visibility, and privacy, ensuring a harmonious blend of form and function.



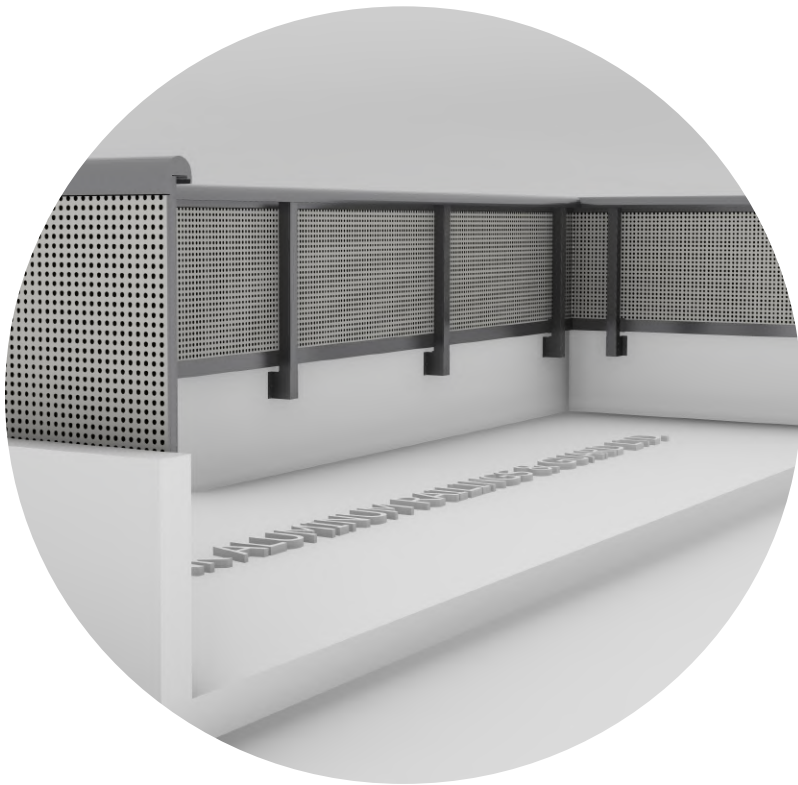
LRPP-002 Side Mounted Perforated panel system



LRPP-003 Overhung Top Mounted Perforated panel system
LINK ALUMINUM RAILINGS & GUARD LTD.

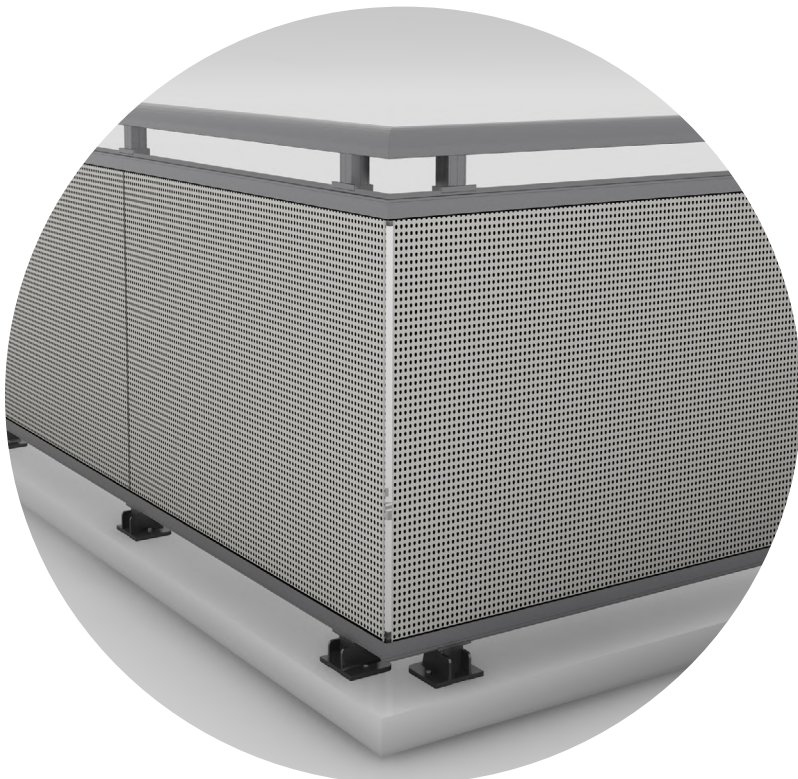
Mounting options

- Top mount
- Side Mount
- Overhung top mount



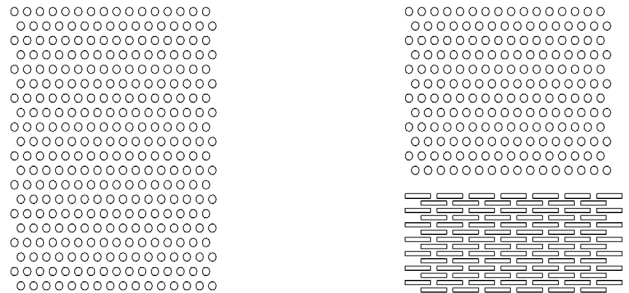
- Post dimensions : Various options available , (1"X2", 1 1/2"/2", 2"/2")
- Extruded screw spline joinery
- Accepts 3mm THK. Perforated aluminum panel within aluminum J & H channel
- Available with multiple top rail designs: (Refer to page 6)
- Tested to CSA & OBC requirements
- Finish in Duracron, Acrynar, Duranar (XL) and Anodized

LRPP-004 Wall Mounted Parapet Perforated panel system

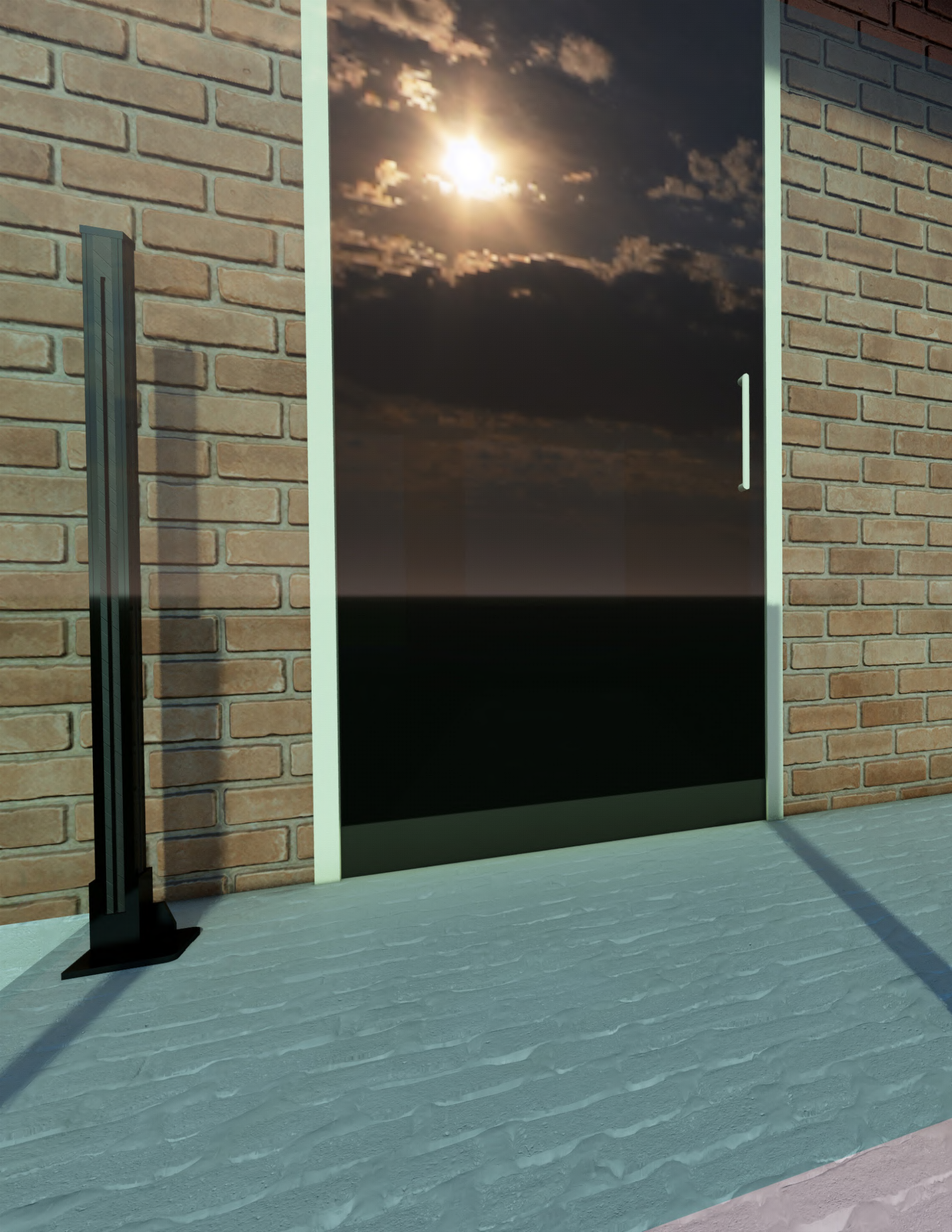


LRPP-001-A Top Mounted Perforated panel system

Perforated panel options



*The color of the actual system may differ from the pictures. The ability to display colors varies throughout monitors and mobile displays, and individual perception of color may vary as well. Furthermore, the displayed photos are rendering. For accurate depiction, get in touch with us to acquire glass samples.

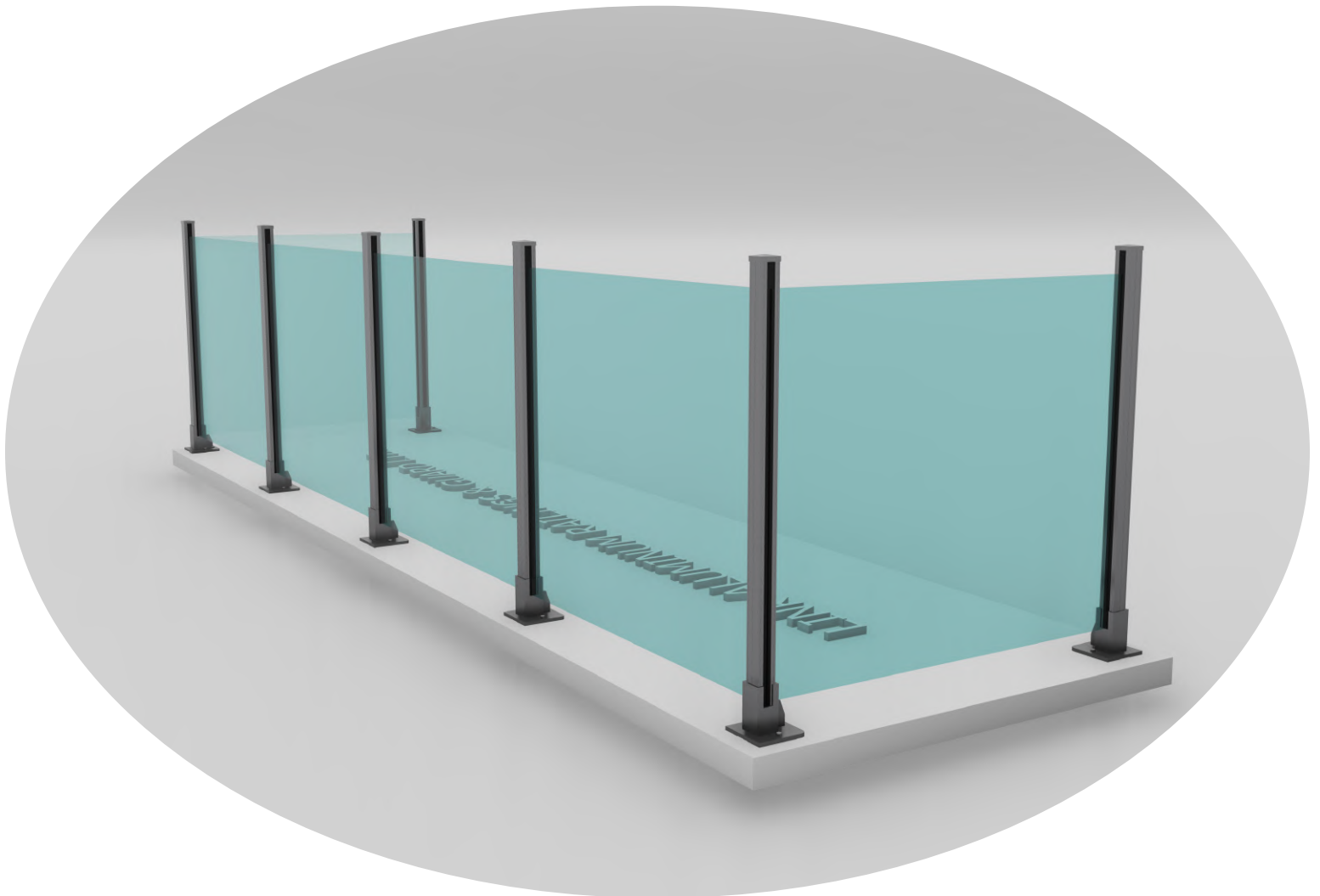




THORNBRIDGE SYSTEMS

The sleek and modern form of thornridge systems highlights the elegance of continuous glass panels held up by strong vertical posts.

Our systems of without top rail are specially made for decks, balconies, and interior areas that want to seem airy and modern. The glass panels are supported by the posts, which improves durability and permits a variety of layouts. It comes with multiple glass and post options.



LRT-0001 Top Mounted Full post Thornridge system

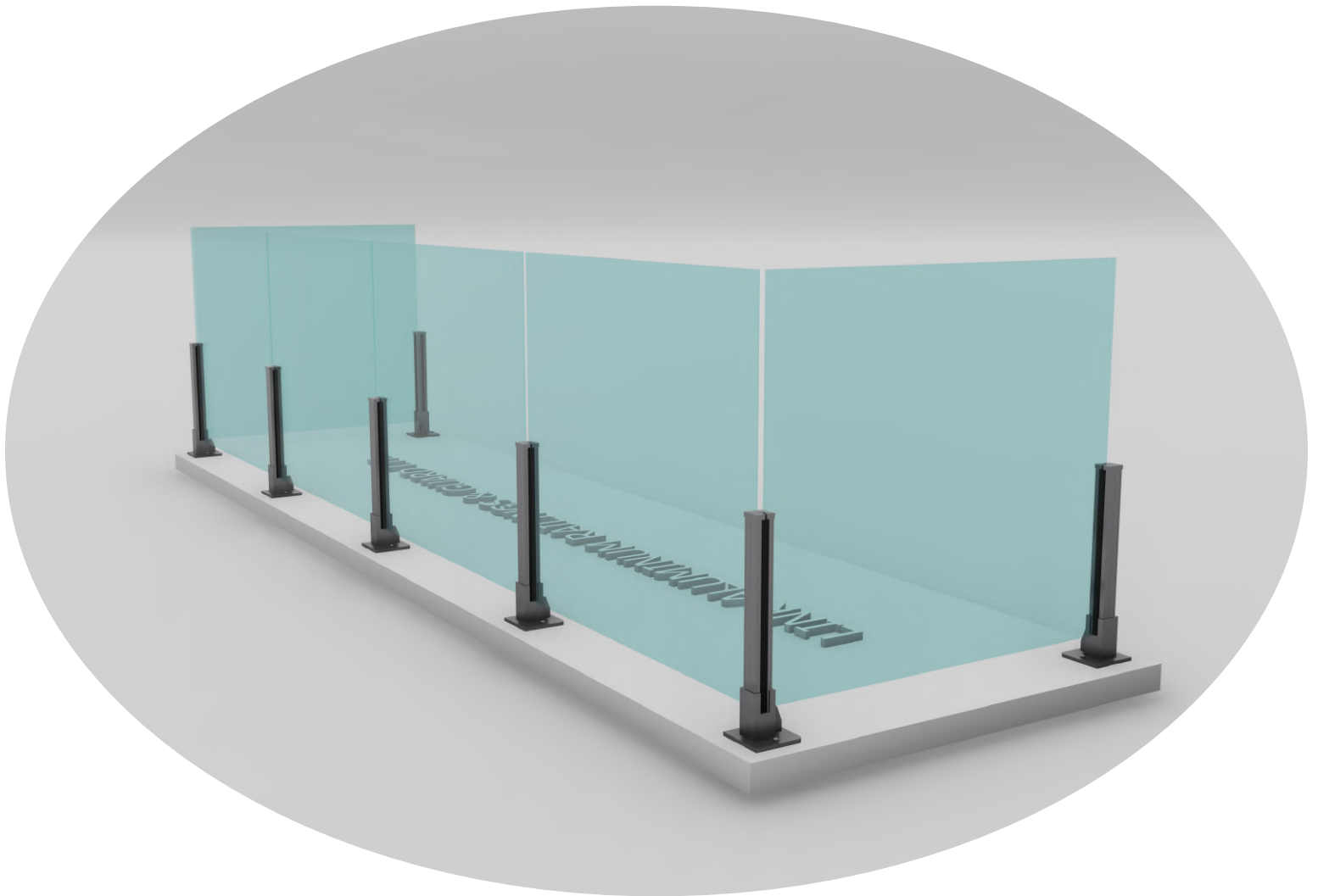
GLASS OPTIONS

Standard Glass

- Clear
- Light Gray
- Solar Blue
- Bronze
- Light green

Premium Glass

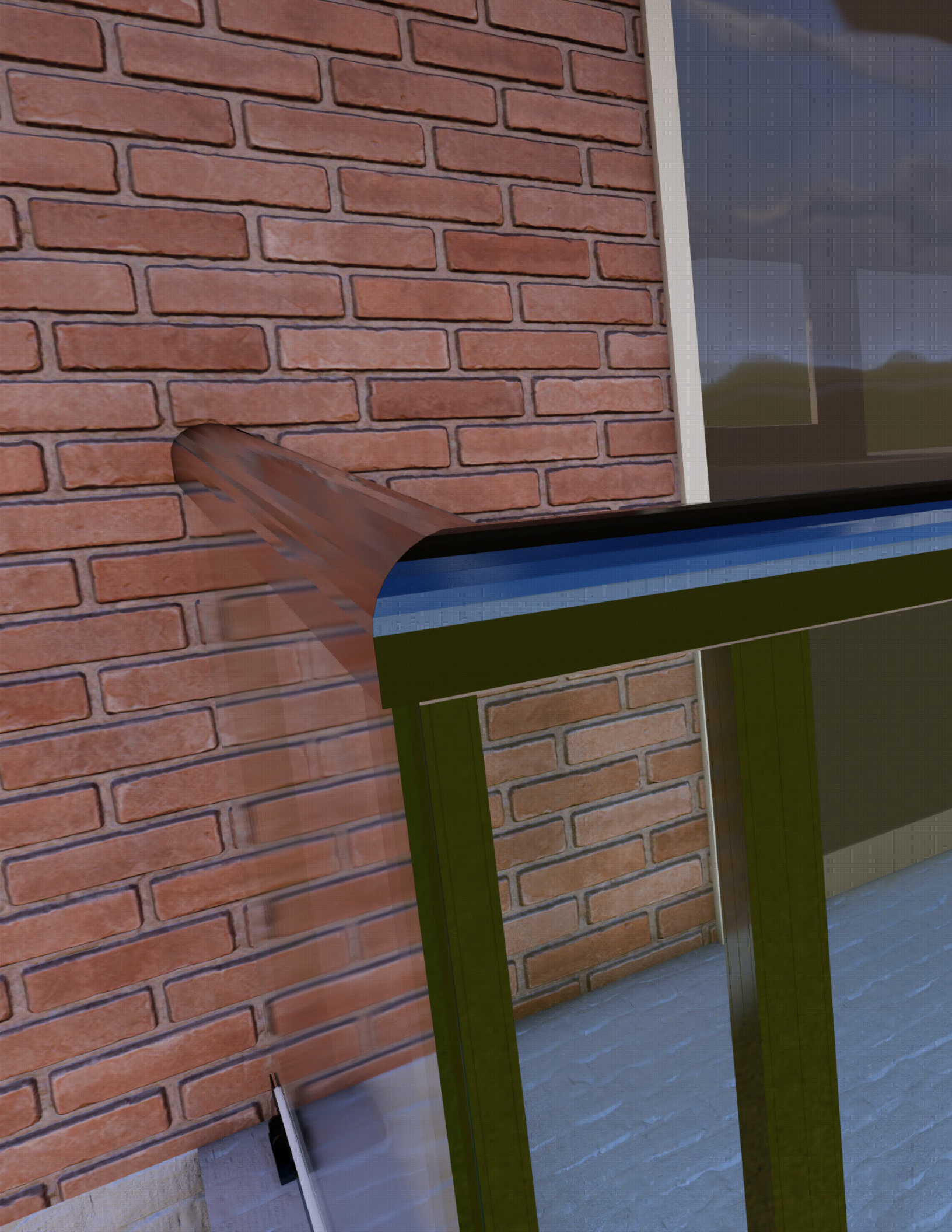
- Laminated
- Fosted
- Dark gray
- Other bird friendly glass upon request
- Special colors upon request

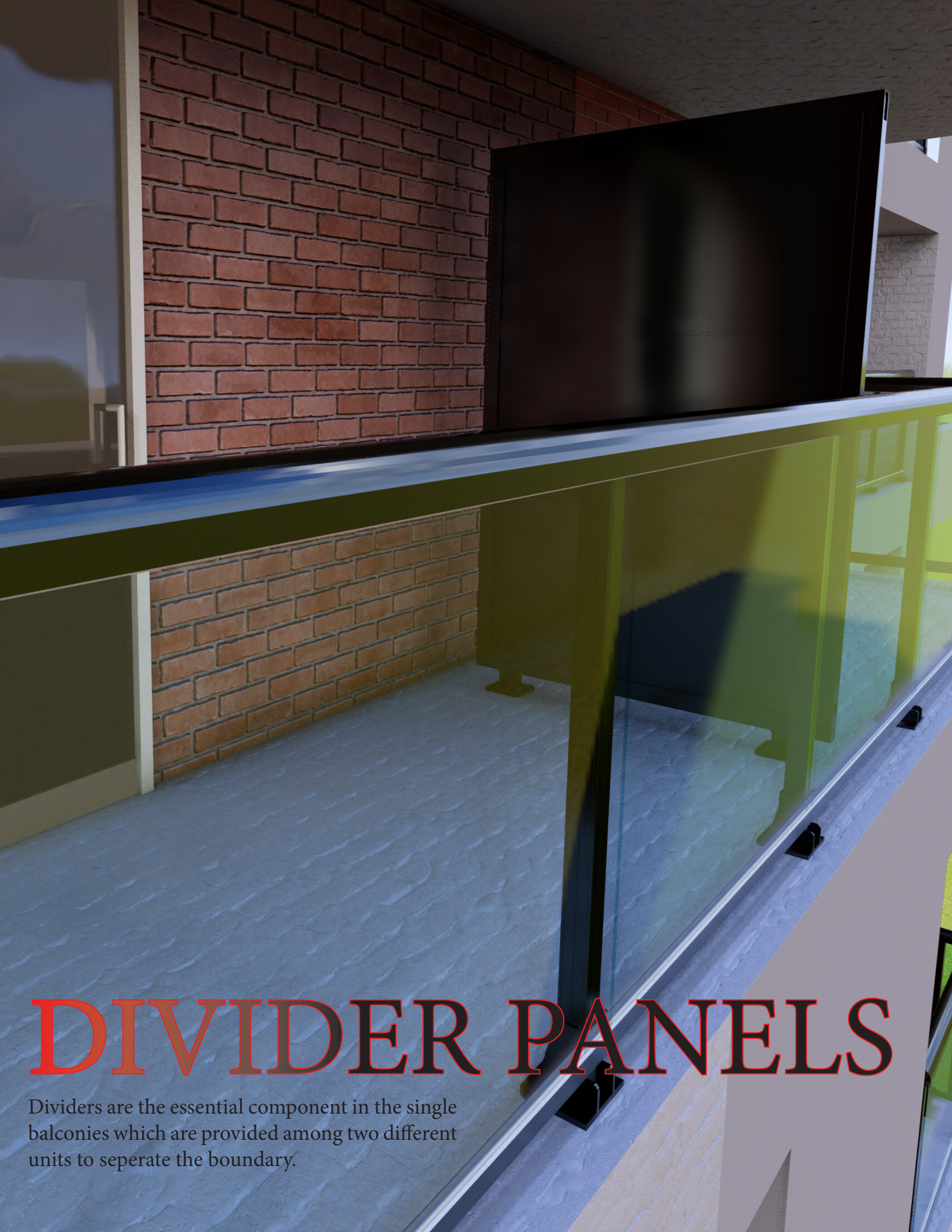


LRT-0002 Top Mounted Half Post Thornridge system

- Post dimensions : Various options available
2" X 2" Rectangular
66mm dia. Round post
- Extruded screw spline joinery
- Center glazed panels
- Available for 6mm & 8mm glasses
- Tested to CSA & OBC requirements
- Various type of top caps available
- Finish in Duracron, Acrynar, Duranar (XL) and Anodized

*The color of the actual system may differ from the pictures. The ability to display colors varies throughout monitors and mobile displays, and individual perception of color may vary as well. Furthermore, the displayed photos are rendering. For accurate depiction, get in touch with us to acquire glass samples.





DIVIDER PANELS

Dividers are the essential component in the single balconies which are provided among two different units to separate the boundary.

We offer divider panels made of glass and metal with various frame designs. Our divider panels provide private outdoor havens while providing protection from prying eyes in metropolitan settings where privacy is frequently invaded. Whether you require a front panel that is 45 degrees or 90 degrees inclined, you will experience the most dependable solutions available in our systems.



LRD-0001 Metal panel divider system

GLASS OPTIONS

Standard Glass

- Clear
- Light Gray
- Solar Blue
- Bronze
- Light green

Premium Glass

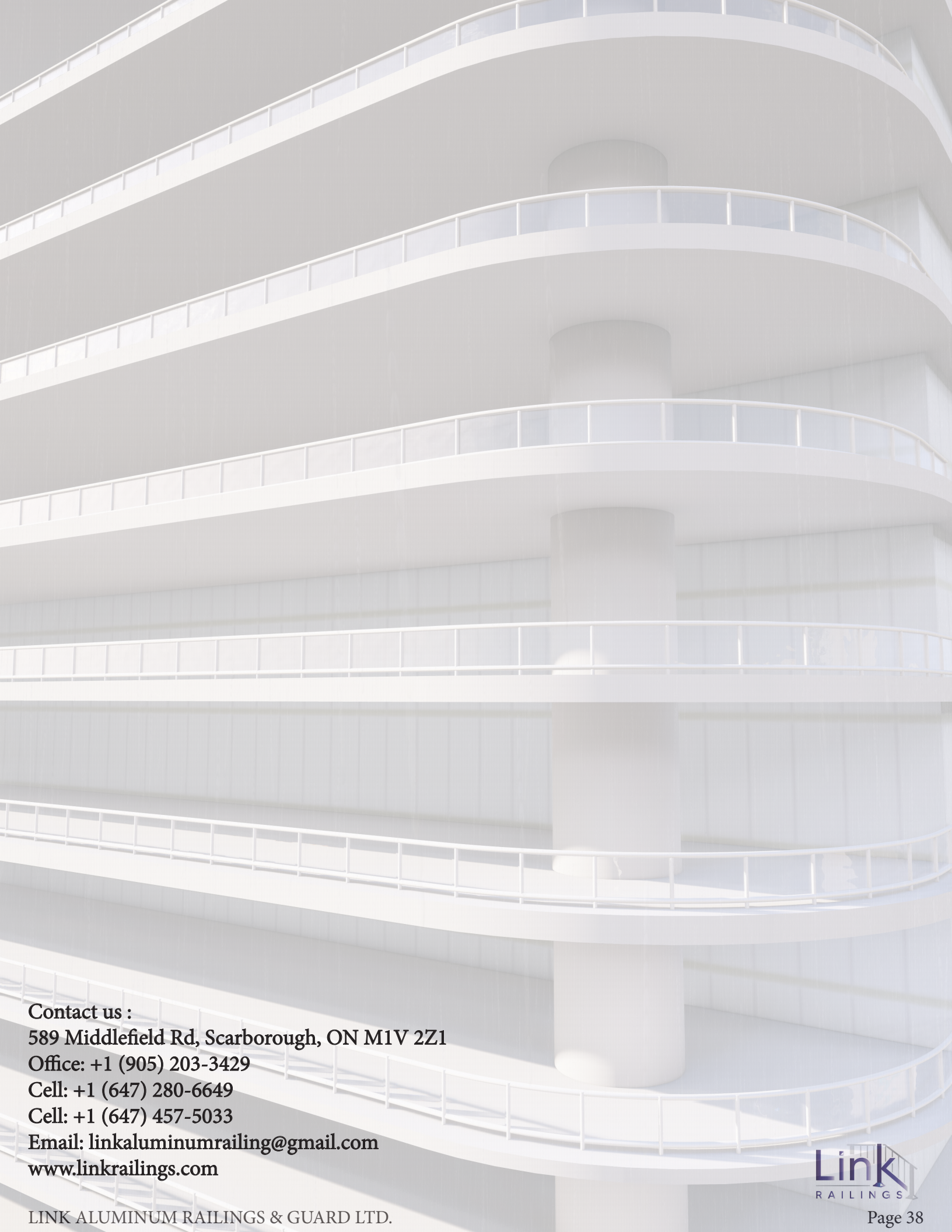
- Laminated
- Fosted
- Dark gray
- Other bird friendly glass upon request
- Special colors upon request



LRD-0002 Glass panel divider system

- Center glazed & Aluminum panels
- Available for 6mm & 8mm glasses & 3mm,6mm aluminum panels.
- Tested to CSA & OBC requirements
- Can be formed in varioud inclination on top.
- Finish in Duracron, Acrynar, Duranar (XL) and Anodized

*The color of the actual system may differ from the pictures. The ability to display colors varies throughout monitors and mobile displays, and individual perception of color may vary as well. Furthermore, the displayed photos are rendering. For accurate depiction, get in touch with us to acquire glass samples.



Contact us :
589 Middlefield Rd, Scarborough, ON M1V 2Z1
Office: +1 (905) 203-3429
Cell: +1 (647) 280-6649
Cell: +1 (647) 457-5033
Email: linkaluminumrailing@gmail.com
www.linkrailings.com